

11/7/2025

Letter No. 273
BY-CRE-03938

Evelyn Pao, P.E., WSDOT Project Director
Washington State Department of Transportation
18911 N Creek Pkwy S, Suite 150
Bothell, WA 98011

Project: I-405, Brickyard to SR 527 Improvement Project
Contract No: 009727

Subject: **Design Related Delays & Impacts for SR-522 Transit Hub Power Source Location**

Dear Ms. Pao:

Skanska is bringing to WSDOT's attention design impacts now recognizable with the finalizing of the easement location of the PSE power connection for the SR-522 transit hub. Please see attached correspondence from AECOM outlining the need for additional unforeseen design that now includes sourcing temporary power to mitigate the delay in establishing permanent power to both the project traffic signals and the 522 Transit HUB, the first power milestone.

These impacts were not reasonably foreseeable by Skanska in the development of its original proposal to WSDOT and are the direct result of conditions arising after contract execution.

Skanska anticipates approximately \$340,362.00 in additional design costs currently. However, Skanska is unable to further develop or submit a more comprehensive design cost proposal until an executed easement and a defined preliminary bore path have been established. Once those prerequisites are in place and the design has sufficiently progressed, Skanska will provide WSDOT with an updated estimate reflecting the expected cost impacts.

Skanska reserves its rights to just compensation for all time and cost impacts per the contract and relevant law.

We would appreciate the opportunity to discuss this further with WSDOT to come to a mutually agreeable resolution. If you have any questions, please do not hesitate to contact me.

Sincerely,



Patrick Prendergast, Project Executive
Skanska USA Civil
18911 N Creek Pkwy S, Suite 300
Bothell, WA 98011



Attachments:

1. 2025.10.03-I-405 BY -PCN-00117 - SR522 Temp Power 100325
2. 2025.10.27-I-405 BY - PCN-00093 - PSE Overhead Relo R1

I-405, Brickyard to SR 527 Improvement Project: Contract Change Scope of Work

Change Title: **SR 522 Temp Power**

Date: **10/3/25**

Rev. **01**

Change No.: **PCN-00117**

Description of Change

The design team has been directed to revise the plans for Stage 2 Phase 3 due to the permanent electrical service not being available for the temporary stage as originally planned.

Schedule

After NTP is provided for this Change, AECOM will submit this Change as an NDC. AECOM is anticipating needing 4 weeks to submit for Final, 3 weeks for WSDOT review and comment, and 4 weeks to incorporate comments and submit for RFC.

This design will be worked through concurrently with other contractual design plan sets and will cause delay to the contractual submittals. Actual delay is currently being evaluated and will be provided once full delay is assessed.

General Notes: Pricing and scope are valid for 30 days from date shown on this document.

Section 2.1 General / Management

1. SOW

- a. Design Document Management
- b. Project Controls and Invoicing
- c. Coordination of Disciplines and Packaging
- d. Project Management of subconsultant
- e. Design Document Management

2. Exclusions

- a. No additional meetings are included in this scope. No additional 3rd party coordination is included in this scope.
- b. Level of Effort and schedule does not include inefficiencies in comment close out process from AHJ's and WSDOT review team
- c. Level of Effort and schedule does not include inefficiencies in constructability review comments from Skanska
- d. DBIC or variance approval for Change is not included

3. Deliverables

- a. Invoices

Section 2.5 Survey

No scope items are included for this discipline for any work related to this work. No effort for this discipline is included in this scope.

Section 2.6 Geotechnical

No scope items are included for this discipline for any work related to this work. No effort for this discipline is included in this scope.

Section 2.7 Pavement

No scope items are included for this discipline for any work related to this work. No effort for this discipline is included in this scope.

Section 2.8 Environmental (One Atlas to coordinate with Skanska on contract changes)

No scope items are included for this discipline for any work related to this work. No effort for this discipline is included in this scope.

Section 2.10 Utilities**1. SOW**

- a. Coordinating with PSE for temporary service for two signals and illumination.
- b. Up to 3 Meetings with supporting sketches for coordinating with PSE

2. Exclusions

- a. There will be no changes to Utility Plans

3. Deliverables

- a. Meeting attendance

Section 2.11 Roadway

No scope items are included for this discipline for any work related to this work. No effort for this discipline is included in this scope.

Section 2.12 Project Documentation

No scope items are included for this discipline for any work related to this work. No effort for this discipline is included in this scope.

Section 2.13 Bridges and Structures

No scope items are included for this discipline for any work related to this work. No effort for this discipline is included in this scope.

Section 2.14 Stormwater

No scope items are included for this discipline for any work related to this work. No effort for this discipline is included in this scope.

Section 2.15 Roadside Restoration

No scope items are included for this discipline for any work related to this work. No effort for this discipline is included in this scope.

Section 2.16 Illumination**1. SOW**

The illumination designer will revise the temporary illumination plans for Stage 2 Phase 3 due to the permanent electrical service not being available for the temporary stage as originally planned. Some lights at the I-405 and SR-522 interchange as well as the permanent signal cabinet transformers for SG-1 and SG-3 will be revised to be powered by existing electrical service SUA 4386 nearby.

2. Exclusions

Items not identified in the scope of work are excluded.

3. Deliverables

Revised plans and calculations as described above for Stage 2 Phase 3 Temporary Illumination. Changes will be an NDC on the Package 7 temporary illumination sheets.

Section 2.17 Traffic Signals

No scope items are included for this discipline for any work related to this work. No effort for this discipline is included in this scope.

Section 2.18 ITS

No scope items are included for this discipline for any work related to this work. No effort for this discipline is included in this scope.

Section 2.19 Signing

No scope items are included for this discipline for any work related to this work. No effort for this discipline is included in this scope.

Section 2.20 Pavement Marking

No scope items are included for this discipline for any work related to this work. No effort for this discipline is included in this scope.

Section 2.21 Traffic Operations

No scope items are included for this discipline for any work related to this work. No effort for this discipline is included in this scope.

Section 2.22 MOT

No scope items are included for this discipline for any work related to this work. No effort for this discipline is included in this scope.

Section 2.26 Toll Infrastructure

No scope items are included for this discipline for any work related to this work. No effort for this discipline is included in this scope.

Section 2.27 Transit

No scope items are included for this discipline for any work related to this work. No effort for this discipline is included in this scope.

Section 2.28 Design Quality Management

1. **SOW**
 - a. Quality Review per the DQMP, including checklists.
2. **Exclusions**
 - a. No additional meetings are included in this scope.
3. **Deliverables**
 - a. QA Audit documentation

Section 2.30 Water Crossings

No scope items are included for this discipline for any work related to this work. No effort for this discipline is included in this scope.

Section 2.31 Vertical Construction

No scope items are included for this discipline for any work related to this work. No effort for this discipline is included in this scope.

DRAFT

I-405 Brickyard DB Project

PCN / CN #: CO ## 117
Name of PCN/CO: SR 522 Temp Power
Date Updated: 10/3/2025

Discipline	Hours	Fee
Section 2.1 General / Management	24	\$9,108
Section 2.5 Survey		\$0
Section 2.6 Geotechnical		\$0
Section 2.7 Pavement		\$0
Section 2.8 Environmental		\$0
Section 2.10 Utilities	24	\$8,100
Section 2.11 Roadway		\$0
Section 2.12 Project Documentation		\$0
Section 2.13 Bridges and Structures		\$0
Section 2.14 Stormwater		\$0
Section 2.15 Roadside Restoration		\$0
Section 2.16 Illumination	152	\$34,960
Section 2.17 Traffic Signals		\$0
Section 2.18 ITS		\$0
Section 2.19 Signing		\$0
Section 2.20 Pavement Marking		\$0
Section 2.21 Traffic Operations		\$0
Section 2.22 MOT		\$0
Section 2.26 Toll Infrastructure		\$0
Section 2.27 Transit		\$0
Section 2.28 Design Quality Management	36	\$9,000
Section 2.30 Water Crossings		\$0
Section 2.31 Vertical Construction		\$0

Totals 236 \$61,168

I-405 Brickyard DB Project

ROM for PCN/CO CO ## 117

Name of PCN/CO SR 522 Temp Power

DISCIPLINE PM

DESIGN ELEMENT IMPACTED	Total Hours
Project Controls	8
Procurement	8
Project Management	4
Change Management	4

I-405 Brickyard DB Project

PCN / CN #: CO ## 117
Name of PCN/CO: SR 522 Temp Power
Discipline Utilities

DESIGN ELEMENT IMPACTED	BASE FILES IMPACTED	SHEETS IMPACTED /ADDED	Total Hours
Coordinating with PSE for temp service for two signals and illumination			24

I-405 Brickyard DB Project

PCN / CN #: CO ## 117
Name of PCN/CO: SR 522 Temp Power
Discipline **illumination**

DESIGN ELEMENT IMPACTED	BASE FILES IMPACTED	SHEETS IMPACTED /ADDED	Total Hours
Electrical circuit and conduit for SR522 lighting, SG-1, and SG-3 power during temporary	Seg2 Stage 2 Phase 3 Temp IL	ILN723, IL72309, IL72310, IL72325, IL72326	90
Electrical calculations			46
QC			16

I-405 Brickyard DB Project

ROM for PCN/CO CO ## 117

Name of PCN/CO SR 522 Temp Power

DISCIPLINE QC

DESIGN ELEMENT IMPACTED	Total Hours
Quality Review per DQMP	12
Discipline Reviews (IDR / CR)	16
Responding to WSDOT Review Comments	8

I-405, Brickyard to SR 527 Improvement Project: Contract Change Scope of Work
 Change Title: Revised PSE Power Routing to Transit HUB Date: **10/27/25**
 Change No.: **PCN-00093**

Rev. **01**

Description of Change

WSDOT / PSE is requesting the designer provide a design an underground power source to SR 522 Transit Hub.

Schedule

After NTP and accurate tree survey information needed for this Change is provided for this Change, AECOM will submit this Change as an NDC for all disciplines except Geotechnical. AECOM anticipates needing 7 weeks to submit for Final, 3 weeks for WSDOT review and comment, and 6 weeks to incorporate comments and submit for RFC. This schedule is for those disciplines that can be incorporated into an NDC. Geotechnical will require a standalone Geotechnical Design Memo. After NTP is provided for this Change, it is anticipated 15 weeks will be needed for Preliminary, 12 weeks for Final, and 3 weeks to submit RFC. Level of effort assumes PSE alignment will not shift from what is provided for development of this Change Order.

General Notes: Pricing and scope are valid for 30 days from date shown on this document.

This design will be worked through concurrently with other contractual design plan sets and will cause delay to the contractual submittals. Actual delay is currently being evaluated and will be provided once full delay is assessed. Potential delays are being assessed for the below design plan sets:

Design Package	Package Description
NDC 048	Retaining Barriers - Segment 2 (1B) - DBIC 020 tie
NDC 049	Retaining Barriers - Segment 2 - DBIC 020 tie
Package 8C	Geotech report for NB405 DAR Bridge (BL)
NDC	Rev of Pole Foundation Report, Including Weather Station- Ungreying / Finalization
10	Stream 25.0L Fish Passage Permanent Tunnel Liner and Headwalls, RW25.00L, MP-25 Cut Slope Stabilization, MP-25 Watermain HDD, EX MSE RW2185L-A, Existing MSE wall at QB 527 FP, BW24.83R
DBIC 035	DP10 Exploration Compliance
10	MP-25 Reinforced Slope Drawings
NDC 087	Retaining Barriers - DP9
NDC 085	DP7; Lightweight Fill over NFP; Footing size change for Canyon Park Ped Bridge
NDC 088	Geofoam under sidewalk at Brickyard East
NDC 095	DP9 - Bridge 405/103E widening Pier 4 and RW 26.34R
RW 527	RW 527 (on hold pending resolution of ROW and easement issues - RFC approximately 12 weeks from receiving wall plan and profile)
Package 7B	Utilities - Brickyard BRT

Package 7B	Utilities - Canyon Park BRT
FDC XX (RFI-292)	Utilities - Canyon Park Power to CT Meter for Orca Card Readers
Segment 3	Utilities - 25L
NDC XX	Utilities - 522 Transit Hub (Power)
Segment 2	Utilities - Waterline Tie-In - SR522 DP3B
Segment 2	Utilities - Waterline Thrust Restraint
Package 8	Utilities - 17th/220th/SR527
Package 8	Utilities - Juanita
Segment 3	Utilities - 228th
11	Utilities - SR 527 Queensborough
NDC XX	Canyon Park Sanitary Sewer
Package 8	Street Improvements (pending Utilities & Drainage)
Package 8	Northcreek Bridge (Transit Hub Breakout)
Package 8	Queensborough 527 RFC Fish Passage (after FP design)
Package 8	Stream 25L Fish Passage FINAL (after FP design)
Package 8	Juanita Creeek Fish Passage RFC (after FP design)
Package 8	Queensborough 405 Fish Passage (after FP design)
THCS	Transit Hub Comfort Station
Segment 2	Landscape (Stream 42 Buffer, after Seg 2 ITS)
Segment 2	Landscape (Sammamish River LSP9, LSP25 & LSP26) PCN41

Section 2.1 General / Management

1. SOW

- a. Design Document Management
- b. Project Controls and Invoicing
- c. Coordination of Disciplines and Packaging
- d. Project Management of subconsultant
- e. Design Document Management

2. Exclusions

- a. No additional meetings are included in this scope. No additional 3rd party coordination is included in this scope.
- b. Level of Effort and schedule does not include inefficiencies in comment close out process from AHJ's and WSDOT review team
- c. Level of Effort and schedule does not include inefficiencies in constructability review comments from Skanska
- d. DBIC or variance approval for Change is not included

3. Deliverables

- a. Invoices

Section 2.5 Survey

No scope items are included for this discipline for any work related to this work. No effort for this discipline is included in this scope.

Section 2.6 Geotechnical

GeoEngineers to coordinate with Pertee, AECOM, Skanska, PSE and WSDOT to review existing geotechnical data, perform HDD related calculations, report findings for review, attend meetings and perform project management tasks. The following are additional scope of work elements triggered by these changes.

1. SOW

- a) Project management (coordination of staff, project meetings, invoicing).
- b) Document review – review boring logs or other pertinent information.
- c) HDD installation force calculations.
- d) Hydraulic fracture calculations.
- e) Settlement calculations.
- f) Report preparation including a calculation verification submittal. Preliminary, Final, and RFC.

2. Exclusions/Assumptions

- a. GeoEngineers is not responsible for evaluating the feasibility of an HDD installation, designing the HDD or preparing an HDD specific design report.
- b. Site-specific subsurface explorations, including but not limited to a necessary SIP, field logging time, utility location and drilling subcontractor, sample collection, laboratory testing, and drafting of boring logs, if needed, are not included.
- c. HDD Design will be completed by others.
- d. HDD design alignment and profile will not be created by GeoEngineers but will be provided to GeoEngineers in AutoCAD and PDF format.
- e. Calculations will be completed for one HDD alignment/profile. Design revisions will incur additional cost.
- f. The proposed conduit will be installed using HDD trenchless methods. If other trenchless methods are determined more applicable, a revision of our scope of work may be required.

3. Deliverables

- a. Preliminary, Final, and RFC versions of a stand-alone geotechnical design memo. Preliminary and Final versions will be subjected to one combined IDR/CR review session each and one WSDOT review session each.

Section 2.7 Pavement

No scope items are included for this discipline for any work related to this work. No effort for this discipline is included in this scope.

Section 2.8 Environmental (One Atlas to coordinate with Skanska on contract changes)

No scope items are included for this discipline for any work related to this work. No effort for this discipline is included in this scope.

Section 2.10 Utilities

Power for SR 522 Transit Hub Station and the SR 522 DA BRT Station

During the RFP stage the Designer Builder met with WSDOT and Puget Sound Energy (PSE) to identify where power would be sourced for the SR 522 Transit Hub Station and the SR 522 DA BRT Station. PSE at the time indicated power could be provided from near UW Bothell. This resulted in the overhead route illustrated in the attached Figure 3 for a power connection point near UW Bothell for the SR 522 Transit Hub Station and the SR 522 DA BRT Station.

Section 2.27.6.2.2. of the RFP Technical Requirements describes that the Design Builder is to coordinate with the Utility Owner (in this case Puget Sound Energy) to install a power connection point (transformer) within the interior of the transit hub. It does not say that the Design Builder is to design or construct power to that power connection point.

- 11 **2.27.6.2.2 SR 522 Transit Hub BRT Station and SR 522 DA BRT Station**
- 12 The Design-Builder shall coordinate with the Utility Owner to install a power connection
- 13 point within the interior of the transit hub. The Design-Builder shall develop and submit a
- 14 service application that accounts for the power needed for BEB, BRT Station Areas, and
- 15 WSDOT facilities.
- 16 The Design-Builder shall install conduit between the SR 522 Transit Hub electrical room
- 17 and the power cabinet at the pick-up platform, drop-off platform, and the northbound and
- 18 southbound BRT Platforms at the SR 522 DA BRT Station.
- 19 The Design-Builder shall provide civil infrastructure equipment pads and provisions for
- 20 all transformers. Transformer requirements for the SR 522 Transit Hub BRT Station are
- 21 indicated below.
- 22 • BRT Station Area
- 23 o BRT Station Area: 100 kVA 120/240V single phase
- 24 o The Design-Builder shall provide conduit and conductors from the
- 25 transformer to the comfort station electrical room.
- 26 • BEB transformer
- 27 o Sound Transit BEB charging: 1000 kVA service with a 480V three-phase
- 28 secondary
- 29 o The Design-Builder shall provide conduit from the BEB transformer to a
- 30 stub up location near the edge of the charging yard.
- 31 o The Design-Builder shall seal conduit for later connection to work by
- 32 others.
- 33 • WSDOT transformer(s) shall meet the requirements of Section 2.16,
- 34 *Illumination.*

Figure 1 is the preliminary electrical and communication plan provided in the RFP documents for the SR522 Transit Hub. This was included in the document "S04_Sound_Transit_BRT_Station_Design_Plans_and_Detail.pdf" as part of Appendix S. It did not identify a power source location – but during the RFP stage the discussions with WSDOT led the team to getting power near UW Bothell.

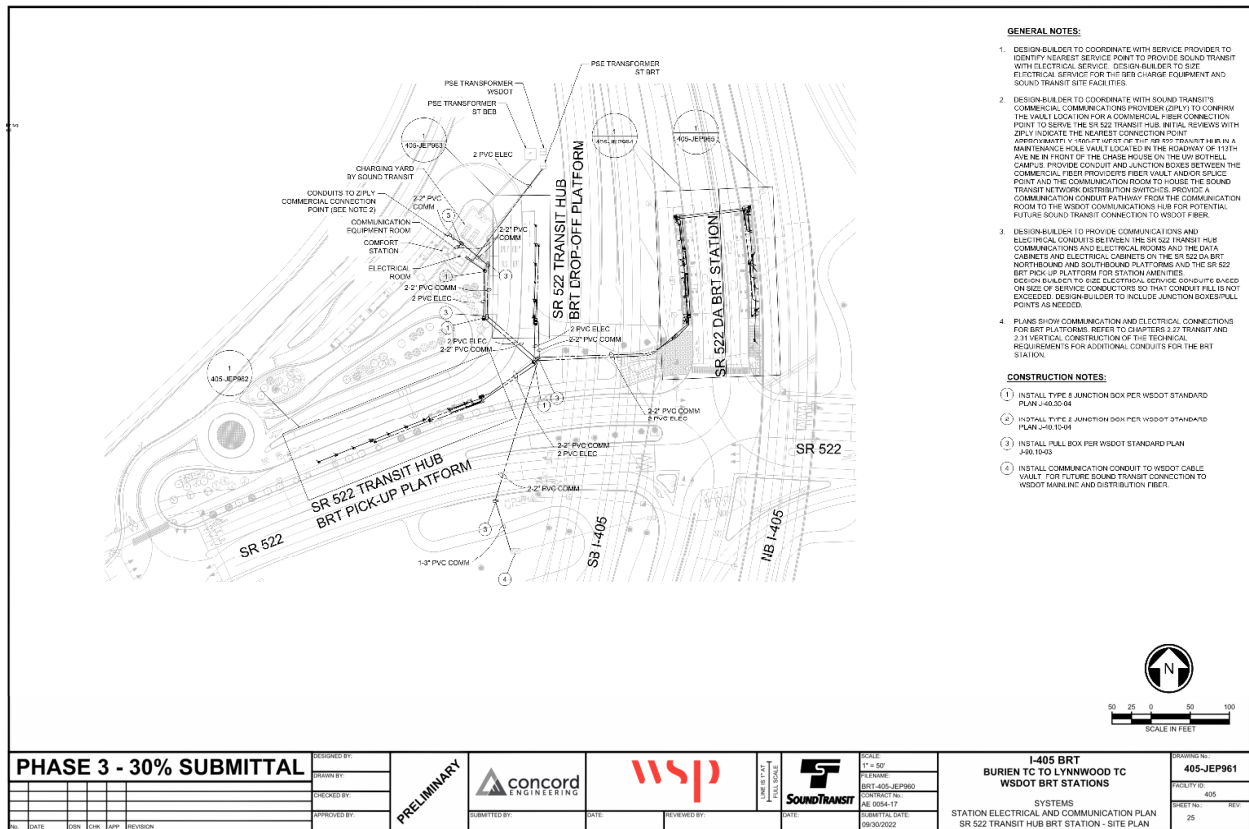


Figure 1 - RFP Preliminary Electrical and Communication Plan

After NTP, subsequent meetings with PSE continued to focus on getting power for the SR 522 Transit Hub Station and the SR 522 DA BRT Station. Preliminary designs focused on a mostly overhead system that would be designed and built by PSE (consistent with the RFP language). As PSE continued to evaluate the routing, they determined that they would not be able to route power from the UW Bothell location. This was because PSE and WSDOT could not agree on a route for maintenance/access and WSDOT permitting. Subsequent meetings settled on the nearest available point from which PSE could provide a route for power would be from the NE quadrant of the I405/SR522 interchange (Bothell 405 Business Park).

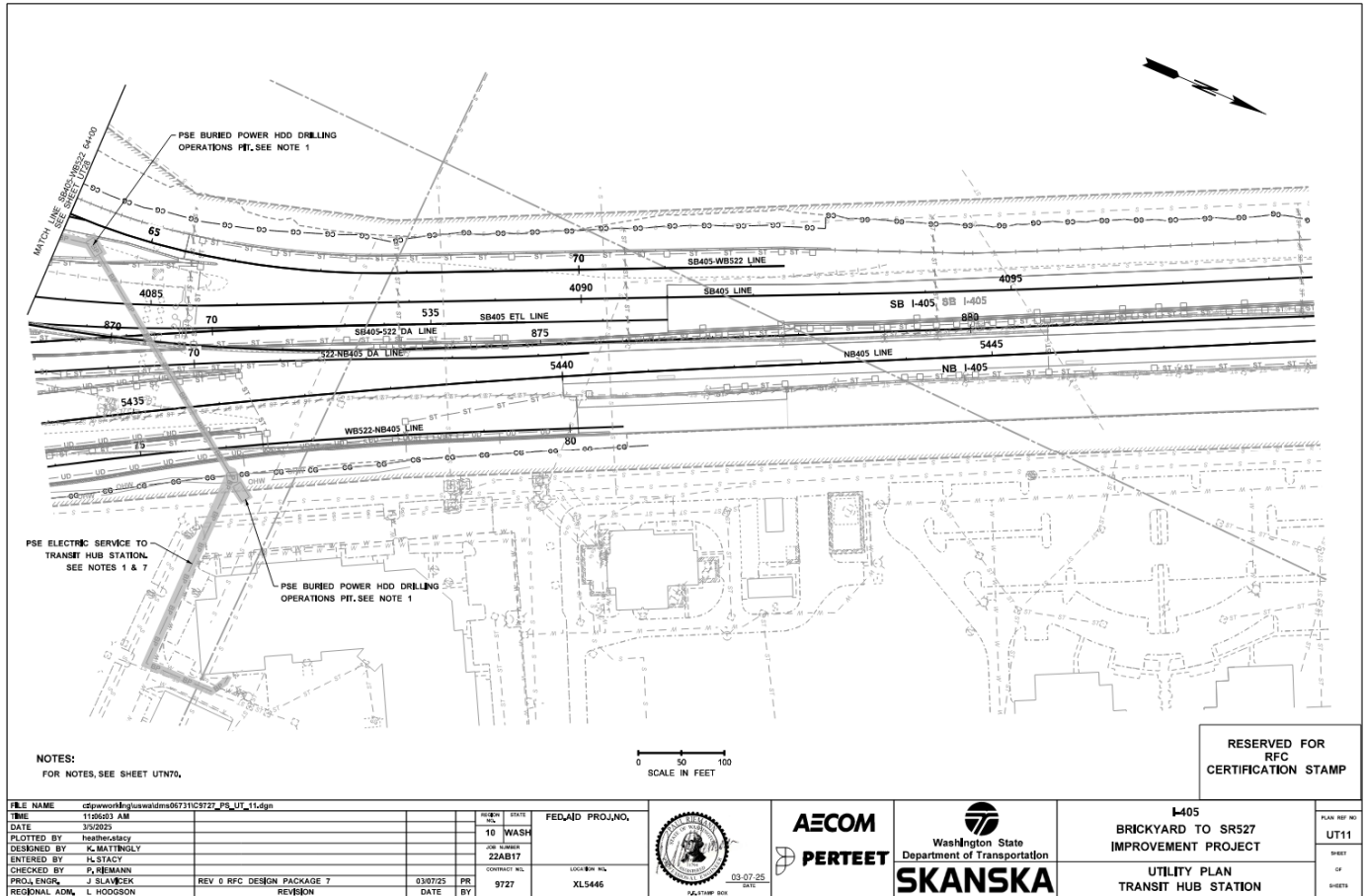


Figure 2 - RFC package drawing

PSE has now stated that they expect the design-builder to design and construct the power connection between the site at Bothell 405 Business Park and the SR 522 Transit Hub Station transformer. This change to the SOW of work for the utilities design will include the following:

1. SOW

Coordinate with PSE and WSDOT to evaluate and confirm alternative routing to provide electrical power to the SR 522 Transit Hub Station transformer that is different than the alignment from the UW Bothell location discussed during the RFP stage. The design team (Pereteet) will prepare a horizontal plan and vertical alignment for the conduit and casing for the electrical conductors to provide electrical power to the SR 522 Transit Hub transformers based on Figure 2 above. PSE will size and design the electrical cables and the transformers for the SR 522 Transit Hub. The following are additional scope of work elements triggered by these changes:

- Coordinate and confirm with PSE location of alternative source of power from the original location near UW Bothell.
- Develop horizontal alignment and plan for conduit system for electrical power from Bothell 405 Business Park to the SR 522 Transit Hub transformers.
- Develop vertical alignment and profile for conduit system for electrical power from Bothell 405 Business Park to the SR 522 Transit Hub transformers. Include profile of casing for a single 4 in. conduit under I405 using a horizontal direct drill (HDD).

- Create plans for the casing of electrical power conduit under I-405. Work with team members to choose casing materials based on geotechnical factors of the HDD boring under I-405 (Geotechnical to be done by others). Perteeet will show these materials on the plans using the information provided by other team members.
- Prepare plans and profiles (up to 2 sheets at 1"=50' scale when plotted on 22"x34" sheets) and up to one detail sheet for both final and RFC submittals. Also include special provisions for casing and conduit materials if not already covered by WSDOT Standard Specifications.

2. Exclusions

- Development of any easements or permits for the electrical power service related to providing electrical power to the SR 522 Transit Hub Station.
- Any design of the electrical components for service to the SR 522 Transit Hub transformers.
- Design of the SR 522 Transit Hub transformers.
- Any alignment different than that illustrated in Figure 2 above.
- Design or calculations for boring pit for the HDD not provided by utility designer. TO be provided by Geotech designer.
- Items not specifically listed in this scope are excluded.
- Site investigation, survey, or field verification.
- Services associated with demolition, removal or disposal of any existing infrastructure.
- Services to validate information provided by Owner and/or others are excluded. All such information, including all Reference information are assumed correct and complete.
-

3. Deliverables

- Plans and profiles (up to 2 sheets at 1"=50' scale when plotted on 22"x34" sheets) and up to one detail sheet for both final and RFC submittals.
- Special provisions for casing and conduit materials if not already covered by WSDOT Standard Specifications.

Section 2.11 Roadway

No scope items are included for this discipline for any work related to this work. No effort for this discipline is included in this scope.

1. SOW

- a. N/A

2. Exclusions

- a. No restoration paving limits will be provided. If this is needed for this Change additional LOE will be required.

3. Deliverables

- a. N/A

Section 2.12 Project Documentation

No scope items are included for this discipline for any work related to this work. No effort for this discipline is included in this scope.

Section 2.13 Bridges and Structures

No scope items are included for this discipline for any work related to this work. No effort for this discipline is included in this scope.

Section 2.14 Stormwater

No scope items are included for this discipline for any work related to this work. No effort for this discipline is included in this scope.

Section 2.15 Roadside Restoration**1. SOW**

The landscape architecture team will prepare revised soil preparation, planting, vegetation protection plans and irrigation plans for the alternative routing to provide electrical power to the SR 522 Transit Hub Station transformer that is different than the alignment from the UW Bothell location discussed during the RFP stage.

Rework of plan sheets at 100-scale (11x17 sheet size) will be prepared for each sheet to depict the restoration. Planting schedules will be revised to reflect revised plant quantities.

Coordination with the following disciplines is anticipated: Utilities for alignment and OneAtlas for additional tree survey coordination. Additional work to revise the VPP report will be completed to account for any tree impacts due to trenching.

2. Exclusions

- Site grading is excluded from the landscape scope of work.
- Permitting processes and coordination. All permitting and coordination with permitting agencies shall be by Skanska.
- Detailed and permanent irrigation system design is excluded. Diagrammatic irrigation plans indicating the extent of temporary irrigation areas, anticipated mainline routing, and anticipated sleeving locations will be provided similar to the Segment 2 drawing packages.
- Existing survey information is assumed to be sufficient for developing the design. If additional survey is required, Skanska shall provide updated survey information.
- Tree survey data provided by OneAtlas is incomplete for this area. New tree survey data will be provided by OneAtlas.
- Slope stabilization measures are understood to not be necessary and therefore are excluded.
- Items not identified in the scope of work are excluded.
- Level of effort assumes new tree survey will all be provided in one complete package to the designer
- Level of effort assumes PSE alignment will not shift from what is provided in this Change Order.

3. Deliverables

- NDC Revision to Segment 2 landscape plans and planting schedule with quantities described above for Final and RFC submittals.
- Revision to the Non-WSDOT Vegetation Protection Plan report to summarize tree impacts

Section 2.16 Illumination

No scope items are included for this discipline for any work related to this work. No effort for this discipline is included in this scope.

Section 2.17 Traffic Signals

No scope items are included for this discipline for any work related to this work. No effort for this discipline is included in this scope.

Section 2.18 ITS

No scope items are included for this discipline for any work related to this work. No effort for this discipline is included in this scope.

Section 2.19 Signing

No scope items are included for this discipline for any work related to this work. No effort for this discipline is included in this scope.

Section 2.20 Pavement Marking

No scope items are included for this discipline for any work related to this work. No effort for this discipline is included in this scope.

Section 2.21 Traffic Operations

No scope items are included for this discipline for any work related to this work. No effort for this discipline is included in this scope.

Section 2.22 MOT

No scope items are included for this discipline for any work related to this work. No effort for this discipline is included in this scope.

Section 2.26 Toll Infrastructure

No scope items are included for this discipline for any work related to this work. No effort for this discipline is included in this scope.

Section 2.27 Transit

No scope items are included for this discipline for any work related to this work. No effort for this discipline is included in this scope.

Section 2.28 Design Quality Management

1. **SOW**
 - a. Quality Review per the DQMP, including checklists.
2. **Exclusions**
 - a. No additional meetings are included in this scope.
3. **Deliverables**
 - a. QA Audit documentation

Section 2.30 Water Crossings

No scope items are included for this discipline for any work related to this work. No effort for this discipline is included in this scope.

Section 2.31 Vertical Construction

No scope items are included for this discipline for any work related to this work. No effort for this discipline is included in this scope.

I-405 Brickyard DB Project

PCN / CN #: PCN00093

Name of PCN/CO: Revised PSE Power Routing to Transit HUB

Date Updated: 10/27/2025

Discipline	Hours	Fee
Section 2.1 General / Management	62	\$24,470
Section 2.5 Survey		\$0
Section 2.6 Geotechnical	390	\$100,913
Section 2.7 Pavement		\$0
Section 2.8 Environmental		\$0
Section 2.10 Utilities	306	\$74,290
Section 2.11 Roadway		\$0
Section 2.12 Project Documentation		\$0
Section 2.13 Bridges and Structures		\$0
Section 2.14 Stormwater		\$0
Section 2.15 Roadside Restoration	224	\$56,121
Section 2.16 Illumination		\$0
Section 2.17 Traffic Signals		\$0
Section 2.18 ITS		\$0
Section 2.19 Signing		\$0
Section 2.20 Pavement Marking		\$0
Section 2.21 Traffic Operations		\$0
Section 2.22 MOT		\$0
Section 2.26 Toll Infrastructure		\$0
Section 2.27 Transit		\$0
Section 2.28 Design Quality Management	90	\$23,400
Section 2.30 Water Crossings		\$0
Section 2.31 Vertical Construction		\$0

Totals 1072 \$279,194

I-405 Brickyard DB Project

ROM for PCN/CO PCN00093

Name of PCN/CO Revised PSE Power Routing to Transit HUB

DISCIPLINE PM

DESIGN ELEMENT IMPACTED	Total Hours
Project Controls	16
Procurement	16
Project Management	16
Change Management	14

I-405 Brickyard DB Project

ROM for PCN/CO PCN00093

Name of PCN/CO Revised PSE Power Routing to Transit HUB

DISCIPLINE Geotechnical

DESIGN ELEMENT IMPACTED	BASE FILES IMPACTED	SHEETS IMPACTED /ADDED	Total Hours
Geotechnical HDD recommendations for ~500' long HDD based on new plan and profile provided by Perteeet for electrical power to SR522 transit hub	None	None	168
Preliminary Design Report for IDR/CR review and WSDOT Review, including comment resolution and QAQC	None	None	102
Final Design Report for IDR/CR review and WSDOT Review, including comment resolution and QAQC	None	None	58
RFC Design Report for submission including QAQC	None	None	30
Project Management	None	None	20
Meetings	None	None	12

I-405 Brickyard DB Project

PCN / CN #: PCN00093
Name of PCN/CO: Revised PSE Power Routing to Transit HUB
Discipline **Utiliites**

DESIGN ELEMENT IMPACTED	BASE FILES IMPACTED	SHEETS IMPACTED /ADDED	Total Hours
New plan and profile for electrical power to SR522 transit hub		UT11, UT28, plus new profile (1) and detail sheet (1)	276
New alignment coordination with WSDOT and Puget Sound Energy			30

I-405 Brickyard DB Project

PCN / CN #: PCN00093

Name of PCN/CO: Revised PSE Power Routing to Transit HUB

Discipline Landscape

DESIGN ELEMENT IMPACTED	BASE FILES IMPACTED	SHEETS IMPACTED /ADDED	Total Hours
Revisions to landscape drawings per new plan and profile for electrical power to SR522 transit hub	C9727_BP_LS_Corridor.dgn, C9727_BP_LS_SoilPrep.dgn, C9727_BP_LS_Irrigation.dgn, C9727_BP_LS_VegProtect.dgn	LSN4, LSS11, LSP11, LSV11, IR11,	120
VPP Report		1 Report	32
QAQC			32
WSDOT Comment Resolution			40

I-405 Brickyard DB Project

ROM for PCN/CO PCN00093

Name of PCN/CO Revised PSE Power Routing to Transit HUB

DISCIPLINE QC

DESIGN ELEMENT IMPACTED	Total Hours
Quality Review per DQMP	30
Discipline Reviews (IDR / CR)	30
Reviewing WSDOT Review Comments (RCSR)	30